

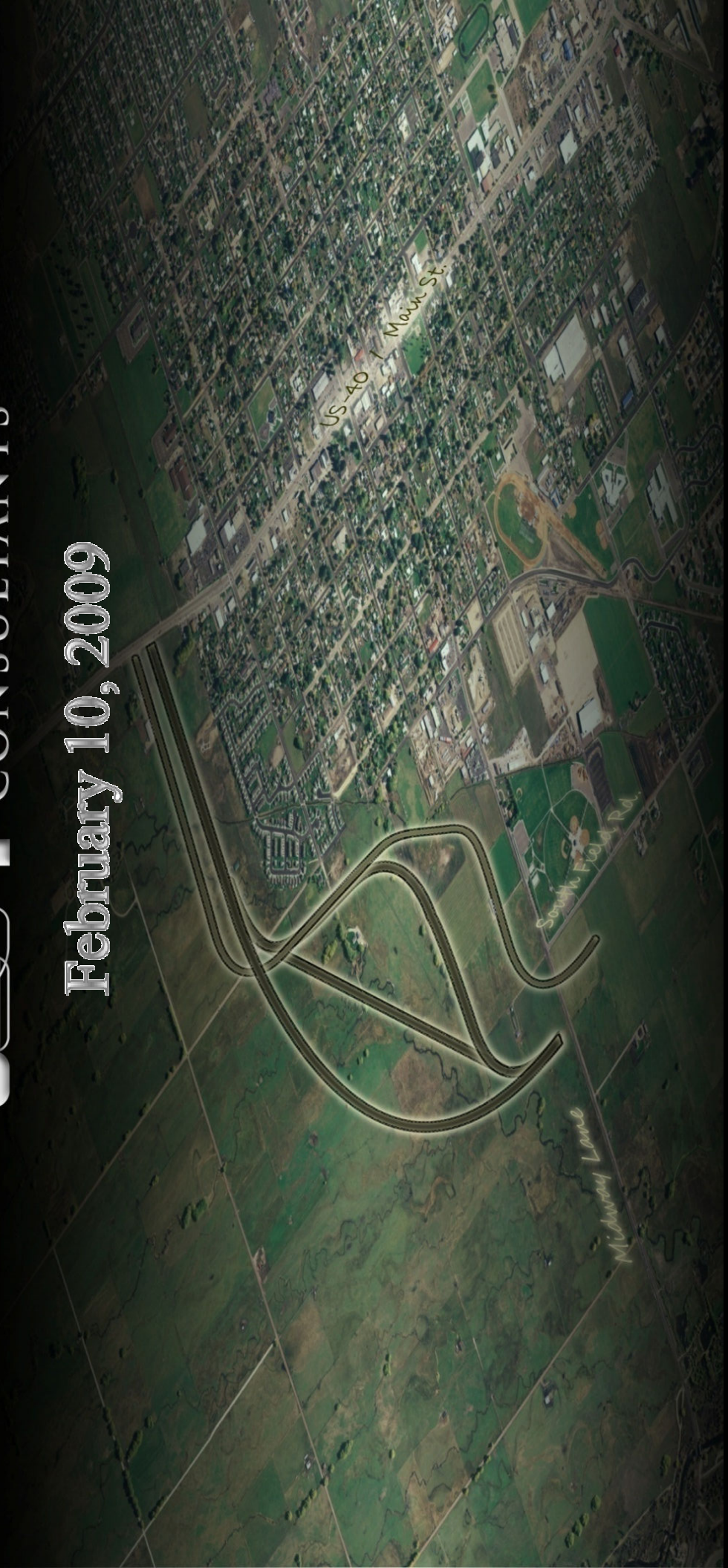
HEBER CITY  
NORTH FIELDS BYPASS STUDY

PREPARED BY



PROJECT  
ENGINEERING  
CONSULTANTS

February 10, 2009



# Results of the Environmental Screening so far based on the following:

- Public Input Open House Dec 2, 2008
- Large Landowners Meeting Jan 21, 2009
- Environmental Impacts Analysis
- Design/Engineering Analysis

# Results from the public who attended the December 2, 2008 Open House

Alignment	Tally of comments	Public Preferred Alignment
<b>A / Green</b>	<b>4</b>	<b>17%</b>
<b>B / Blue</b>	<b>2</b>	<b>9%</b>
<b>C / Purple</b>	<b>2</b>	<b>9%</b>
<b>D / Yellow</b>	<b>5</b>	<b>22%</b>
<b>E / Red</b>	<b>10</b>	<b>43%</b>

Some comments the public had:

**“MUST HAVE A COMPROMISE BETWEEN TRAFFIC SAFETY AND THE DISTURBANCE OF WET LANDS”**

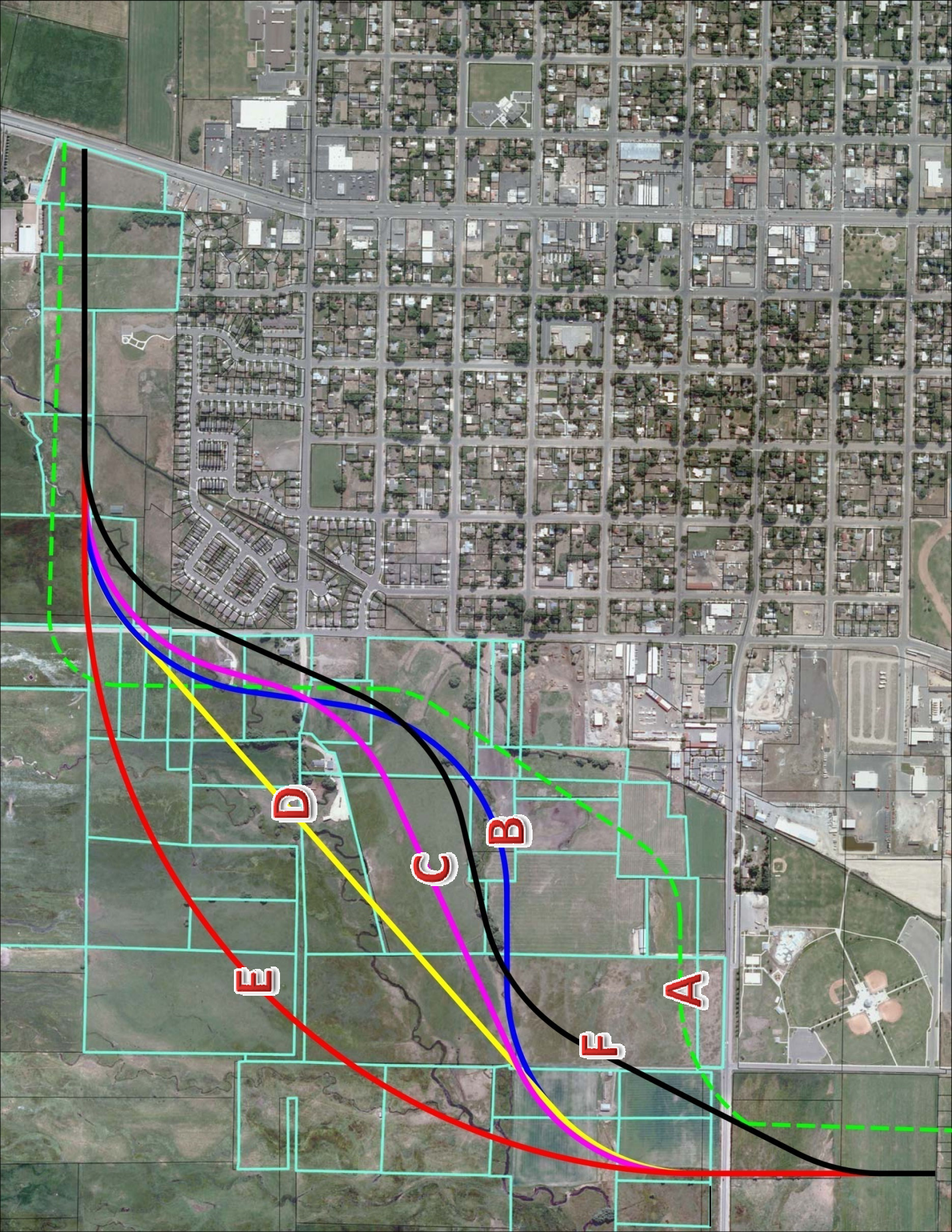
**“I AM A COMMERCIAL TRUCK DRIVER AND SEE ROUTE E AS A MUCH SAFER DRIVE”**

**“SAFETY IS OUR BIG CONCERN”**

**“I AM VERY PLEASED TO SEE SUCH IN DEPTH PLANNING GOING ON NOW RATHER THAN AFTER ALL AVAILABLE LAND HAS BEEN DEVELOPED”**

# Large Landowners Meeting:

- Attendees have a better understanding of roadway design and AASHTO criteria
- Did not want to bisect large contiguous parcels to preserve farm/ranch operations
- Attendees were able to design their own alignment using templates meeting AASHTO Standards
- Alignment F is their preferred alignment



D

B

C



E

A

F

# Tabulation of alignment impacts

Alignment	Number of Parcels Affected	Effected SQ.FT	Historic (Section 4f & 6f)	Flood Plain SQ.FT (FEMA)	National Wetlands Inventory SQ.FT	Threatened & Endangered Species Habitat Impact (3)	Number of Relocations	Estimated Cost for R/W (cost assumed from county tax records)	Geometry (Consistent with AASHTO)
<b>A / Green</b>	27	987,359	NO	NONE	257,659	YES	1	\$1,061,771	NO
<b>B / Blue</b>	23	976,760	NO	3,225	146,207	YES	1	\$1,009,100	YES
<b>C / Purple</b>	21	935,590	NO	11,420	134,321	YES	1	\$901,200	YES
<b>D / Yellow</b>	21	913,144	NO	13,495	163,794	YES	0	\$806,550	YES
<b>E / Red</b>	22	968,623	NO	78,939	292,868	YES	0	\$705,200	YES
<b>F / Black</b>	20	889,753	YES	NONE	101,908	YES	2*	\$873,180	YES

 = GREATEST (WORST) IMPACT OUT OF THE SIX ALIGNMENTS  
 = LEAST IMPACT OUT OF THE SIX ALIGNMENTS

\* Frontage impact on 1 property causes potential relocation

## NOTES

- 1 Muir Fields Park property cost were assumed from an adjacent parcel.
- 2 Wetlands mitigation will be required if alignment F is chosen because this parcel contains prior wetland mitigation.
- 3 Ute Ladies Tresses, Yellow Billed Cuckoo, Canada Lynx – Large habitat areas include most of Heber Valley.

## ACRONYMS

AASHTO AMERICAN ASSOCIATION OF STATE HIGHWAY AND TRANSPORTATION OFFICIALS  
 4F / 6F HISTORIC SITES / PUBLIC PARKS / WILD LIFE / WATER FOWL / PROTECTED AREAS  
 FEMA FEDERAL EMERGENCY MANAGEMENT AGENCY  
 R/W RIGHT OF WAY

# Project Engineering Consultants

## Observations:

- Best Design/Engineering alternative is D or E (less curves).
- All 5 original alignments have relatively comparable impacts to the environment.
- Alignment F has impacts to Muir Fields Park. The Park is a (4f) property & prior wetland mitigation site.

# WHERE DO WE GO FROM HERE?

- Choose an alternative for future right-of-way preservation & conduct second and final open house showing the preferred alternative.
- Or
- Conduct second and final open house showing all six alternatives to receive input on the engineering and environmental impact analysis.
- Prepare final report to document process and any conclusions.